



Estate Agents



Auctioneers

Beaufort Road, Southbourne, Bournemouth, BH6 5AN

£725,000 – Freehold

**Spacious Detached Period House | Porch | Entrance Hallway | Downstairs Wet Room | Front Reception Room
Second Reception Room/Bedroom 5 | Lounge | Modern Kitchen | Conservatory | First Floor Landing | Four Bedrooms
Two Bathrooms | Detached Garage & Driveway with Parking for 4/5 Cars | Rear Garden**

A deceptively spacious 4/5 bedroom detached period home situated in the heart of Southbourne just 500 yards to the popular shopping parade at Southbourne Grove with its array of independent shops, bars and restaurants and also within the coveted Stourfield School catchment area. The property is well presented throughout, boasts huge accommodation over two floors and a host of benefits including UPVC double glazing, gas central heating, grand entrance hallway with original tiling, downstairs wet room, three large ground floor reception rooms, modern kitchen, conservatory, four first floor bedrooms, two bathrooms, detached garage and off street parking for 4/5 cars. A great family home - viewing is highly recommended.

Enter via the UPVC double glazed porch into the hallway which has original character features including a tiled floor, high ceilings and staircase to the first floor; there is a useful ground floor wet room. To the front aspect there are two spacious reception rooms both with bay windows (one is in use as a ground floor bedroom), to the rear is the lounge which features a wood burning stove and has French doors leading out to the garden. The kitchen is fitted with an extensive range of modern units and Range Master double oven & hob; French doors lead to the huge conservatory with doors to the garden.

Upstairs, from the generous landing there are four spacious bedrooms. The main family bathroom has been remodelled with a 4-piece stylish suite of bath, separate shower cubicle, w/c and basin all with contemporary tiling. There is also a separate shower room which comprises of a shower cubicle and wash basin - there is space to add a WC in this room (which could also be adapted into an en-suite if so desired). Access to large loft space from the landing.

Outside, the front garden has been laid to shingle with mature shrubs with off street parking for 4/5 cars. Detached garage with power and light. The sunny westerly facing rear garden is mainly laid to lawn with mature shrub borders.

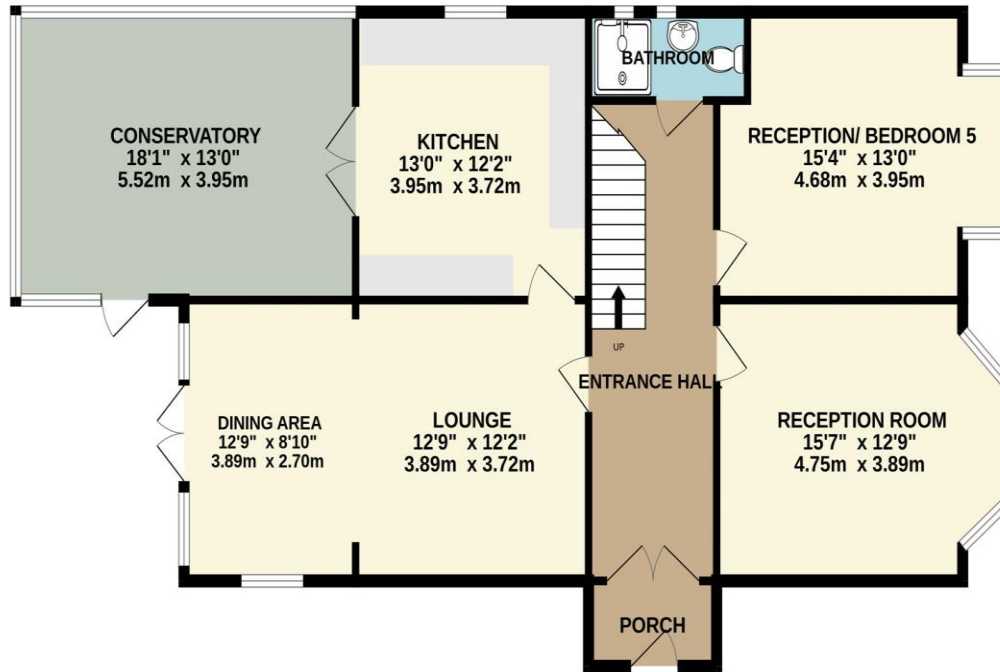
Council Tax Band: E

EPC Rating: 70 | C

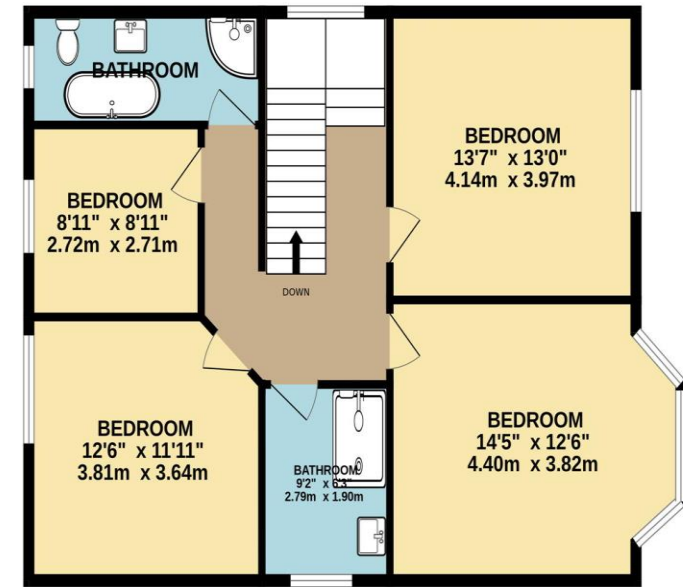




GROUND FLOOR
1213 sq.ft. (112.7 sq.m.) approx.



1ST FLOOR
833 sq.ft. (77.4 sq.m.) approx.



TOTAL FLOOR AREA : 2046 sq.ft. (190.1 sq.m.) approx.

Whilst every attempt has been made to ensure the accuracy of the floorplan contained here, measurements of doors, windows, rooms and any other items are approximate and no responsibility is taken for any error, omission or mis-statement. This plan is for illustrative purposes only and should be used as such by any prospective purchaser. The services, systems and appliances shown have not been tested and no guarantee as to their operability or efficiency can be given.
Made with Metropix ©2024

Disclaimer These particulars, whilst believed to be accurate are set out as a general outline only for guidance and do not constitute any part of an offer or contract. Intending purchasers should not rely on them as statements of representation of fact, but must satisfy themselves by inspection or otherwise as to their accuracy. We have not carried out a detailed survey nor tested the services, appliances and specific fittings. Room sizes should not be relied upon for carpets and furnishings. The measurements given are approximate. No person in this firm's employment has the authority to make or give any representation or warranty in respect of the property.

Richard Godsell – Estate Agents – Auctioneers

3 Southbourne Grove • Southbourne • Bournemouth • BH6 3RE

Tel: 01202 424214 | Email: southbourne@richardgodsell.com

Offices at

Southbourne • Christchurch • London

www.richardgodsell.com

